

New Preparative Column Packing System : *FlexPacker*

FlexPacker is state of the art flexible and innovative system for the packing, on the same skid, of preparative columns of different diameters ($\varnothing \geq 50$ mm) designed for SFC, HPLC and SMB.



FlexPacker Key Features:

- Pack your preparative column 50 mm and 76 mm i.d on the same system.
- When a column is packed, it can be removed from the packer and kept packed for a coming project. Axial compression on the bed is set and maintained thanks to an innovative piston locking system.
- Column can also be used in dynamic axial compression mode when it is attached to the packer. A hydraulic jack maintains a constant pressure on the chromatographic bed.
- Tuneable packing pressure.
- Small foot print: only 55 x 55 cm.

Column Key Features:

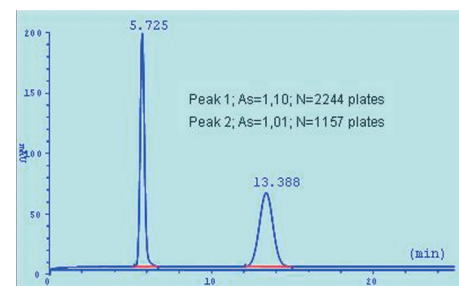
- High pressure version available for SFC (50 or 76 x 500 mm : i.d x l) designed in compliance with CODAP and ASME rules (max pressure 300 bars).
- Low pressure version for HPLC (50 or 76 x 500 mm i.d x l) and SMB (50 or 76 x 220 mm i.d x l) with heating jacket.
- Stainless steel 316 L and PTFE material in contact with sample.
- Inlet and outlet column distributor for better peak shape.
- Individual column mounted on small mobile skid (30 x 30 cm foot print).



HPLC column 76 x 500 mm (i.d x l)

Preparative Columns With Switching Valve:

- Set of 4 columns mounted on a skid with automatic switching valve for column selection.
- Available for SFC and HPLC in different inner diameter.
- Reduce downtime: Columns are packed and ready to be used.
- Optimise laboratory space: the multi column skid is mobile and only 55 x 60 cm foot print.



TSO on Chiralpak AD-20 μ m (HPLC conditions)

We provide also **semi preparative SFC columns : 10 ; 20 and 30 mm** inner diameter rated for 300 bars, designed specially for SFC where high pressure is needed.